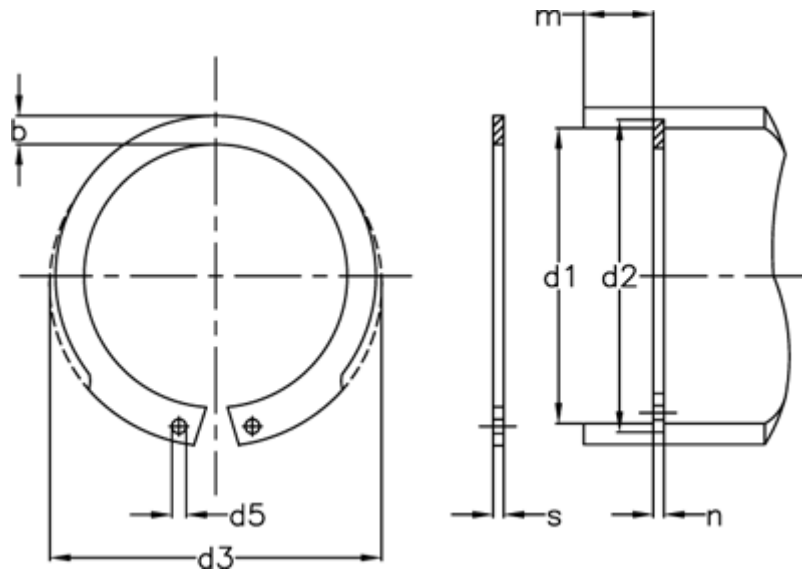


Article number: 0106042

Description: Retaining ring JV 25

Measures



AN mm ²	= 24	FRg kN	= 5.0	tol	= 0.1
b	= 2.8	FR kN	= 14.8	tol	= -0.06
d1	= 25	g	= 1.0	tol	= +0,42-0,21
d2	= 26.2	K kN-mm	= 30.6	tol	= +0,21
d3	= 26.9	m min	= 1.30	Tong	= ZGJ-1
d5 min	= 1.5	Nominal drive	= 1.8	Weight kg/1000	= 1.40
Description	= JV 25	s	= 1.20		
FN kN	= 4.00	t	= 0.60		